

# HYDRAULIC SWING MOTORS

Ningbo Tech Hydro Co. Ltd.



# Swing Motors

As a renowned global brand in hydraulics, Tech Hydro stands out as your premier partner for Hydraulic Travel Motors and Swing Motors. The TH- TM series Final Drives and TH- SM Swing Drives are the preferred choice among leading excavator manufacturers in China.

Tech Hydro is at the forefront of innovation in China, being the first company to design and produce closed-loop Travel Motors. Our TH- BM series Track Motors are widely utilized in Loaders and Agricultural Machinery.

With our skilled technical teams and dedicated service personnel, Tech Hydro offers robust support throughout both the pre-sales and post-sales processes. We invite you to join us on this exciting journey as we drive advancements in the industry and achieve outstanding results together. We look forward to contributing to your success story.



# TH-SM Swing Motor

## Key Features

- Consisted of high efficiency swashplate piston Motor and planetary reducing gearbox.
- Built-in Relief Valve, Anti-reverse Valve, Parking Brake.
- Compact design with small volume.
- Smooth transmission and low noise.
- Excellent performance and long durability.
- Connection dimensions are perfect interchangeable with the famous brands.
- Widely used in various Excavators, Concrete pump, Crane and Drilling Equipments..

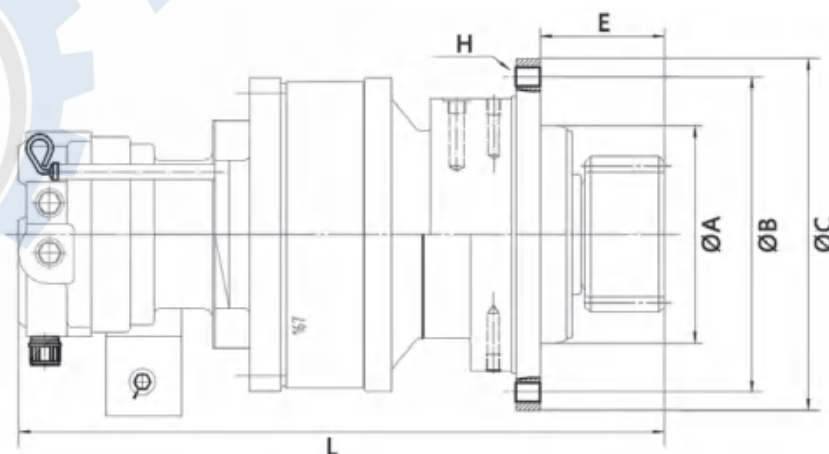


## Specifications

Model	WSM-30	WSM-43	WSM-64	WSM-80	WSM-151
Input Flow	60 L/min	60 L/min	60 L/min	60 L/min	60 L/min
Motor Displacement	30 ml/r	30 ml/r	30 ml/r	30 ml/r	30 ml/r
Max Working Pressure	21 Mpa	21 Mpa	21 Mpa	21 Mpa	21 Mpa
Gear Ratio	19.46	19.46	19.46	19.46	19.46
Max. Output Torque	1940 N.m	1940 N.m	1940 N.m	1940 N.m	1940 N.m
Max. Output Speed	103 r/min	103 r/min	103 r/min	103 r/min	103 r/min
Weight	80 kg	80 kg	80 kg	80 kg	80 kg
Machine Application	5~6 Ton	5~6 Ton	5~6 Ton	5~6 Ton	5~6 Ton

## Connection Dimensions

Model	A	B	C	E	H	L	Shaft Gear
WSM-30	200	275	312	98.5	7-Φ18	502	M7-13T
WSM-43	200	275	312	98.5	7-Φ18	502	M8-13T
WSM-64	200	290	323	114.5	9-Φ18	595	M10-12T
WSM-80	200	290	323	114.5	9-Φ18	595	M10-12T
WSM-151	310	360	410	114.5	12-Φ22	767	M12-13T



# TH-M2X/M5X Swing Motor

## Key Features

- Consisted of high efficiency swashplate piston Motor and planetary reducing gearbox.
- Built-in Relief Valve, Anti-reverse Valve, Parking Brake.
- Compact design with small volume.
- Smooth transmission and low noise.
- Excellent performance and long durability.
- Connection dimensions are perfect interchangeable with the famous brands.
- Widely used in various Excavators, Concrete pump, Crane and Drilling Equipments..

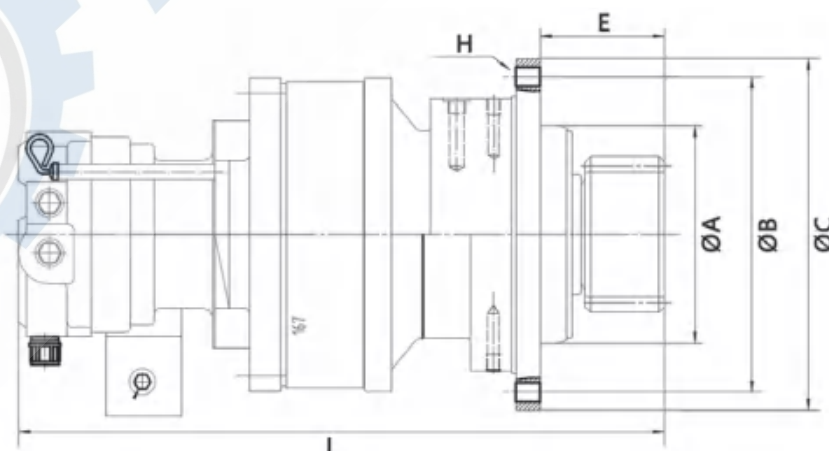


## Specifications

Model	M2X63-19	M5X130-20	M5X170-20	M5X250-19
Input Flow	140 L/min	234 L/min	225 L/min	380 L/min
Motor Displacement	64 cc/r	130 cc/r	169.4 cc/r	250 cc/r
Max Working Pressure	24 Mpa	25.5 Mpa	25.5 Mpa	27.5 Mpa
Gear Ratio	19.2	20	20	19.5
Rated Output Torque	4700 N.m	10500 N.m	13800 N.m	21424 N.m
Max. Output Speed	114 rpm	80.5 rpm	66.6 rpm	77.6 rpm
Machine Application	12~15 Ton	15~20 Ton	20~23 Ton	25~35 Ton

## Connection Dimensions

Model	A	B	C	E	H	L	Shaft Gear
M2X63-19	Φ200	Φ290	Φ323	115	6-Φ18+Φ20	609	M10-Z12
M5X130-20	Φ310	Φ360	Φ410	155	11-Φ22+Φ24	800	M12-Z13
M5X170-20	Φ345	Φ400	Φ450	179.5	14-Φ24	870	M12-Z13
M5X250-19	Φ350	Φ430	Φ480	179.5	12-Φ26	760	M12-Z13





## NINGBO TECH HYDRO CO. LTD.

---

TEL: +86 574 8702 1030

EMAIL: [Sales@techhydro.com.cn](mailto:Sales@techhydro.com.cn)

WEB: [www.techhydro.com.cn](http://www.techhydro.com.cn)

