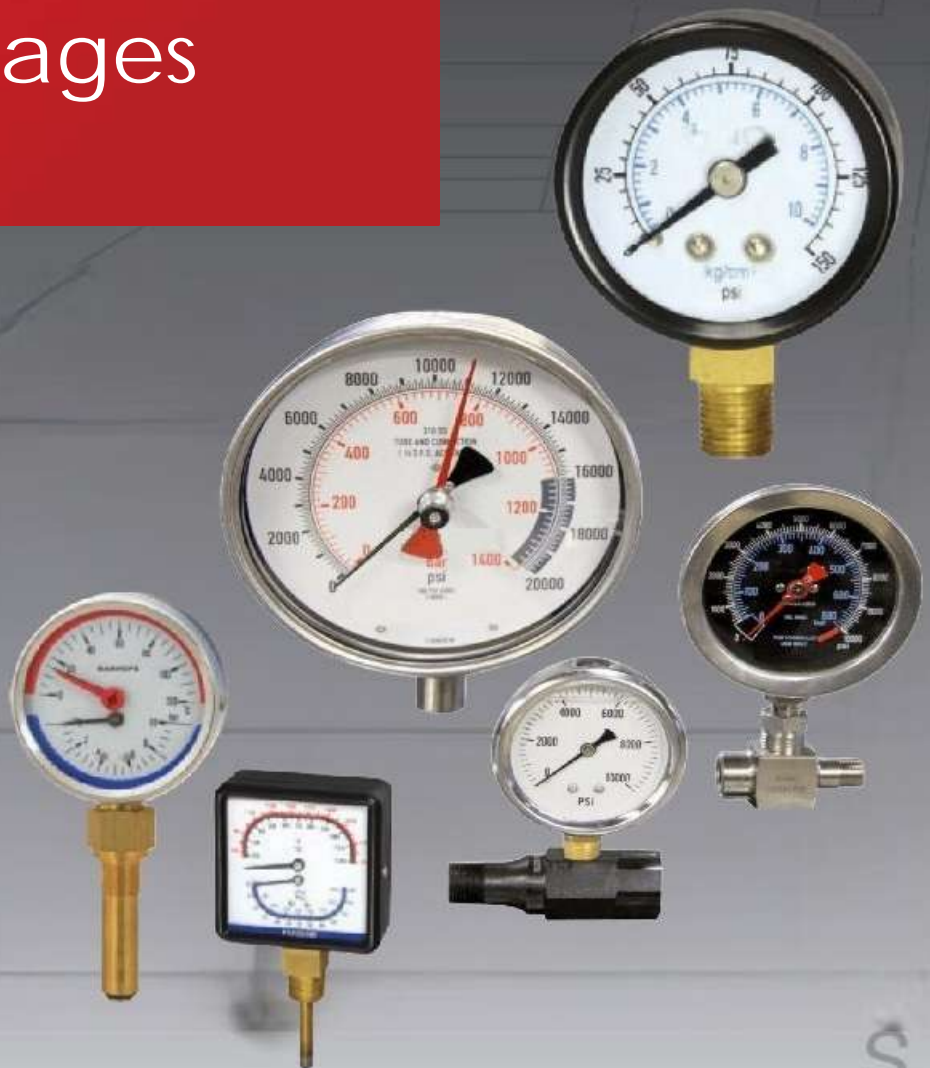


# Hydraulic Guages



# DRY GAUGES



## SPECIFICATIONS

All gauges are a one piece design.

Socket	Copper alloy
Case	Black steel
Bourdon Tube	Circular in copper alloy up to 600 PSI Helical above 900 PSI
Movement	Copper alloy
Window	Acrylic
Dial	White plastic, black scale
Pointer	Black ABS plastic
Connection	Bottom (Model A); Center back (Model D)
Standard Threads	1/4" NPT - 1/8" NPT on some sizes
Accuracy	Class 1.6 - 2.5 ANSI B40.1 Grade B
Temperature Range	Ambient: -40°C to 60°C, media: max 60°C
Pressure Utilization	Static 75% max. scale; Dynamic 66% max. scale
Protection Degree	IP 43
Scale	Concentric 270° PSI/Bar



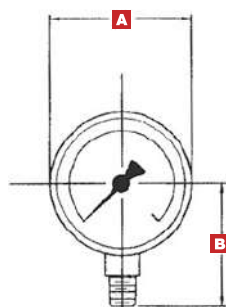
**TH-MPD**

**Custom gauges available, please contact Tech-Hydro**

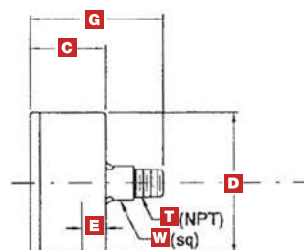
## DIMENSIONS

■ "A" nominal size

Bottom  
Mount



Center  
Back



Size	Weight	A	B	C	D	E	G	T	W
1-1/2"	0.16 lbs.	1.57"	1.42"	1.61"	1.61"	0.31"	1.83" <sup>1</sup>	1" or 1/4" NPT	0.55" <sup>2</sup>
2"	0.22 lbs.	1.97"	1.77"	1.06"	1.93"	0.39"	1.87" <sup>1</sup>	1" or 1/4" NPT	0.55"
2-1/2"	0.29 lbs.	2.48"	2.11"	1.1"	2.42"	0.39"	1.89" <sup>1</sup>	1" or 1/4" NPT	0.55"

<sup>1</sup> For gauges with 1/8" NPT connections, subtract 0.08 inches from "G" dimension.

<sup>2</sup> For 1 1/2" LM gauges with 1/8" NPT connection, "W" dimension also changes to 0.47".

## ORDERING INFORMATION

TH-	MPD	1	P	30	A	1/4"
	Dry gauge model	Diameter	Type	Pressure range (PSI)	Connection	Thread
		1 - 2-1/2"	P - Pressure	✓ denotes availability by size	A - Bottom	1/4" - 1/4" NPT
		3 - 2"		PSI 1-1/2" 2" 2-1/2"	D - Center back	1/8"* - 1/8" NPT
		4 - 1-1/2"		30 ✓ ✓ ✓		* Available for 1-1/2" and 2" back mount gauges only
				60 ✓ ✓ ✓		
				100 ✓ ✓ ✓		
				160 ✓ ✓ ✓		
				200 ✓ ✓		
				300 ✓		
				600 ✓		
				1000 ✓		
				2000 ✓		
				3000 ✓		
				4000 ✓		
				5000 ✓		

Additional options are available. Please contact Tech-Hydro Industries for details.



**MODEL MPG**

## DESCRIPTION

Our MPG series is a high quality line of glycerin filled 2 1/2" and 4" pressure gauges typically used in hydraulic and pneumatic systems where vibration and pulsation are present. The glycerin is used to keep the internal parts lubricated, keeps contamination away from the moving parts and helps reduce vibration and shock. Available in vacuum through 10,000psi.

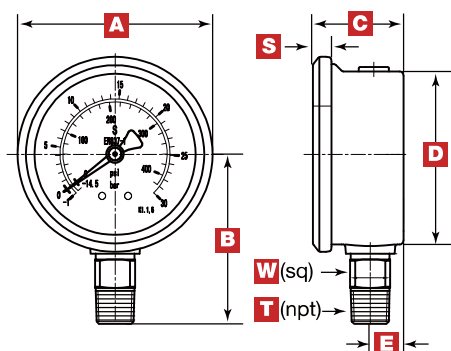
## SPECIFICATIONS

All gauges are a one piece design.		Connection	Bottom (Model A) Center back (Model D) 2 1/2". Lower back 4"
Socket	Copper alloy		
Case	Stainless steel		
Flange and Ring	Stainless steel (Model E)	Standard Threads	1/4 NPT and SAE -4
Ring	Stainless steel (Model B)	Filling Liquid	Glycerine fluid
Bourdon Tube	Circular in copper alloy up to 600 PSI, Helical in copper alloy above 900 PSI	Accuracy	1.5% of span
		Temperature Range	Between -20°C to + 80°C
		Working Range	Steady: 3/4 scale valve, Fluctuating: 2/3 scale valve, Short time: full scale
Movement	Copper alloy	Protection Degree	IP 65
Window	Polycarbonate, acrylic 4"	Scale	Concentric 270° - PSI/Bar
Dial	White ABS, black scale	<b>Custom gauges available, please contact Tech-Hydro.</b>	
Pointer	Black enamelled aluminium		
Mounting	Model E: Front flange with 3 mounting holes Model B: With special ring and back clamp.		

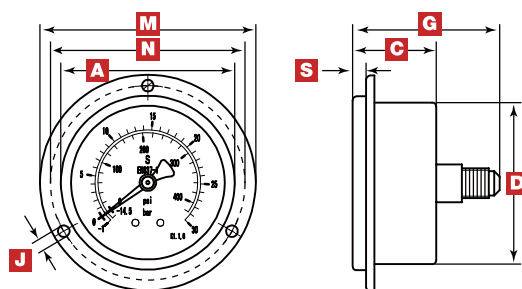
## ORDERING INFORMATION

TH-	MPG	1	V	30	A	N
	<b>Liquid-filled gauge model</b>	<b>Diameter</b>	<b>Type</b>	<b>Pressure range</b>	<b>Style</b>	<b>Thread</b>
		1 - 2-1/2"	V - Vacuum	30/0 - 30 in.Hg/0 psi	A - Bottom stem	N - 1/4" NPT
		2 - 4"	C - Compound P - Pressure	30/30 - 30 in.Hg/30 psi	B - Panel clamp**	S - SAE-4
				30 - 30 psi	D - Center back (Not available on 4" gauge)	
				60 - 60 psi	E - Panel flange** (Not available on 4" gauge)	
				100 - 100 psi	* Panel flange and clamp may be ordered separately to fit "D" style gauge 2-1/2" model only.	
				160 - 160 psi	<b>Part Number:</b>	
				200 - 200 psi	MPG-1-E - Flange	
				300 - 300 psi	MPG-1-B - Clamp	
				600 - 600 psi		
				1000 - 1000 psi		
				1500 - 1500 psi		
				2000 - 2000 psi		
				3000 - 3000 psi		
				4000 - 4000 psi		
				5000 - 5000 psi		
				6000 - 6000 psi		
				10000 - 10000 psi		

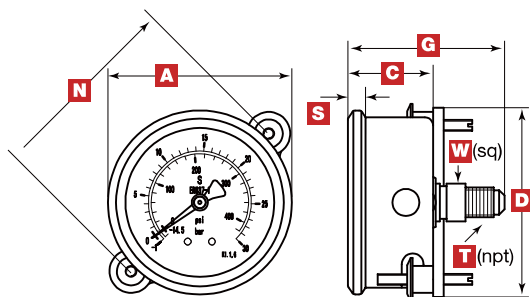
## DIMENSIONS



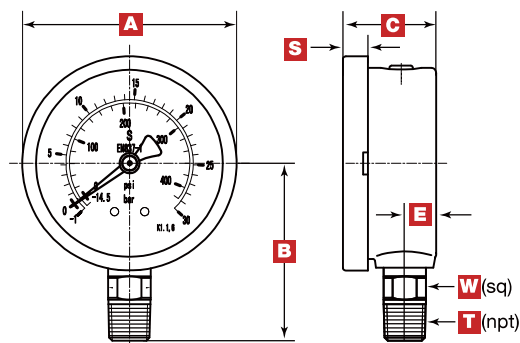
2-1/2" MPG Model A



2-1/2" MPG Model D & E



2-1/2" MPG Model B



4" MPG Model A

Size	Weight	A	B	C	D	E	G	H	J	M	N	S	T	W
2-1/2"	0.42 lbs	2.5"	2.13"	1.26"	2.44"	0.51"	2.13"	--	0.14"	3.35"	2.95"	0.26"	1/4"	0.55"
4"	1.76 lbs	4"	3.41"	1.89"	3.99"	0.61"	3.13"	1.18"	0.19"	5.20"	4.57"	0.31"	1/4"	0.87"

Size	Weight	A	B	C	E	G	S	W
SAE-4 2-1/2"	0.51 lbs	2.5"	2.41"	1.23"	0.51"	2.41"	0.24"	0.55"

- "A" nominal size
- T = 7/16" - 20" SAE Connection, Supplied with Viton o-ring, hex nut, and washer

FOR MORE INFORMATION PLEASE CONTACT US

*SALES@TECHYDRO.COM.CN*



**TECHYDRO**

☎ +86-15869517019

✉ SALES@techydro.com.cn

🌐 WWW.TECHYDRO.COM.CN

📞 whatsapp/Wechat: +86-15869517019

TEL: +86(0574) -87021030